



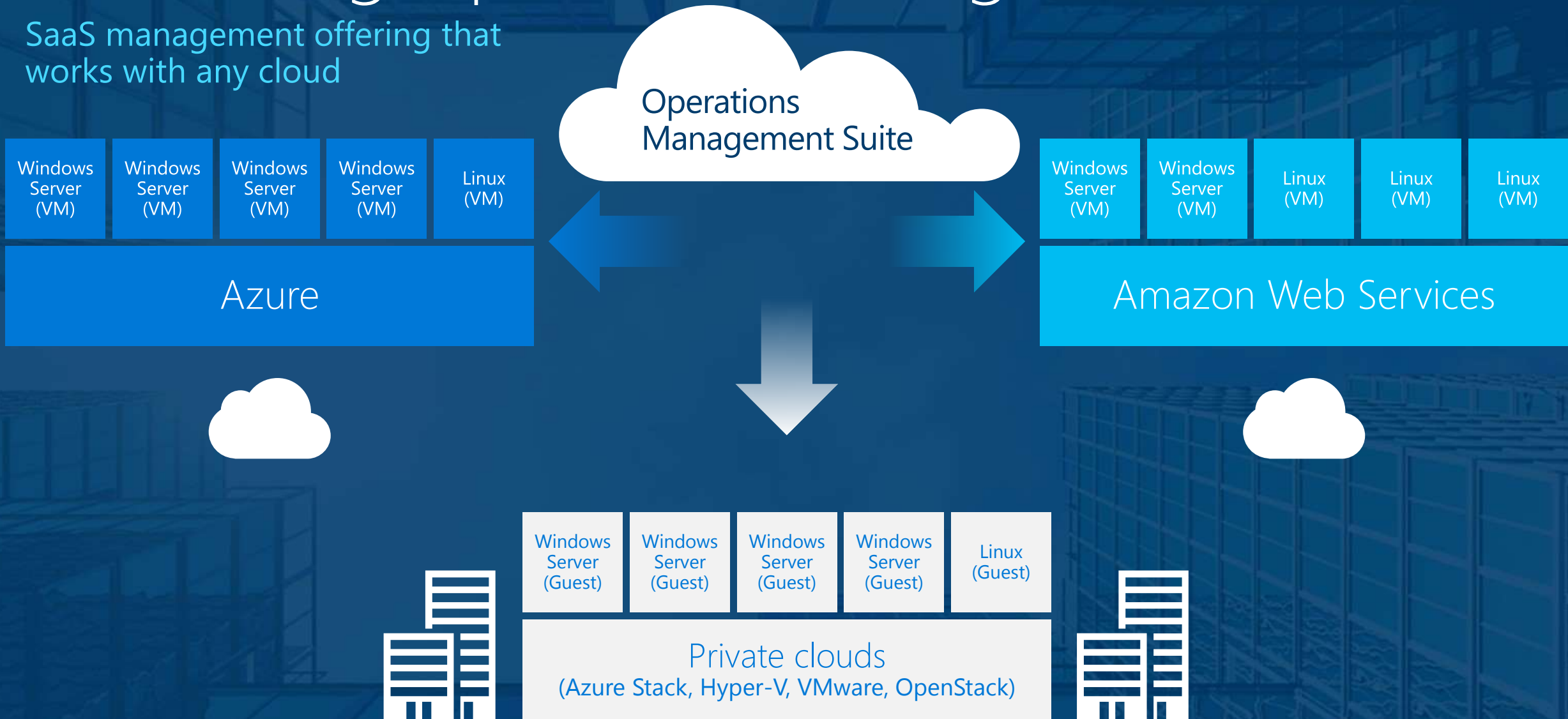
Microsoft Operations Management Suite

Игорь Шаститко, эксперт по ИТ-инфраструктуре

www.youtube.com/iwalker2000

Introducing Operations Management Suite

SaaS management offering that works with any cloud

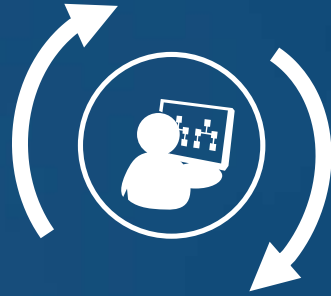


OMS Solutions



Log analytics

Gain visibility across your hybrid enterprise cloud



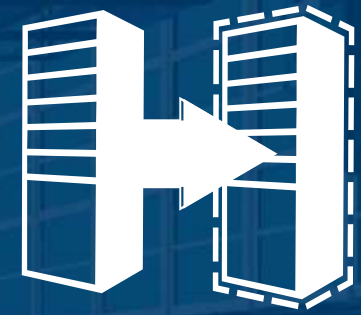
Automation

Orchestrate complex and repetitive operations



Availability

Increase data protection and application availability



Security

Help secure your workloads, servers, and users

Overview

Log Search

My Dashboard

Solutions Gallery

2.7GB
Servers and Usage

AD Assessment

4 Servers Assessed

3 High Priority Recommendations

6 Low Priority Recommendations

72 Passed Checks

Alert Management

0 Active critical alerts in the last 24 hours

4 Active warning alerts in the last 24 hours

Malware Assessment

35% NEEDS ATTENTION

1 Servers with Active Threats

38 Servers with Inadequate Protection

Automation

9 Runbooks

15 Jobs in the last 7 days

Capacity Planning

23.6% Available Cores

62.3% Available Memory

42.5% Available Storage

Change Tracking

20 Software changes in the last 24 hours

6 Windows service changes in the last 24 hours (excludes Status)

Backup

ITPRodBackup

13 Servers backed up

3 TB Backup data

Security and Audit

95 Active Computers in the last 24 hours

64 Accounts Authenticated in the last 24 hours

Log analytics

Gain visibility across your hybrid enterprise cloud.

- Deliver unparalleled insights across your datacenters and public clouds, including Azure and AWS.
- Collect, store, and analyze log data from virtually any Windows Server and Linux source.



Deliver unparalleled insights

Easy collection, correlation, and visualization of your machine data

Log management across physical, virtual, and cloud infrastructure



Insight into physical, virtual, and cloud infrastructure health, capacity, and usage

Capacity planning and deep visibility into your datacenter and across premises



Proactive operational data analysis

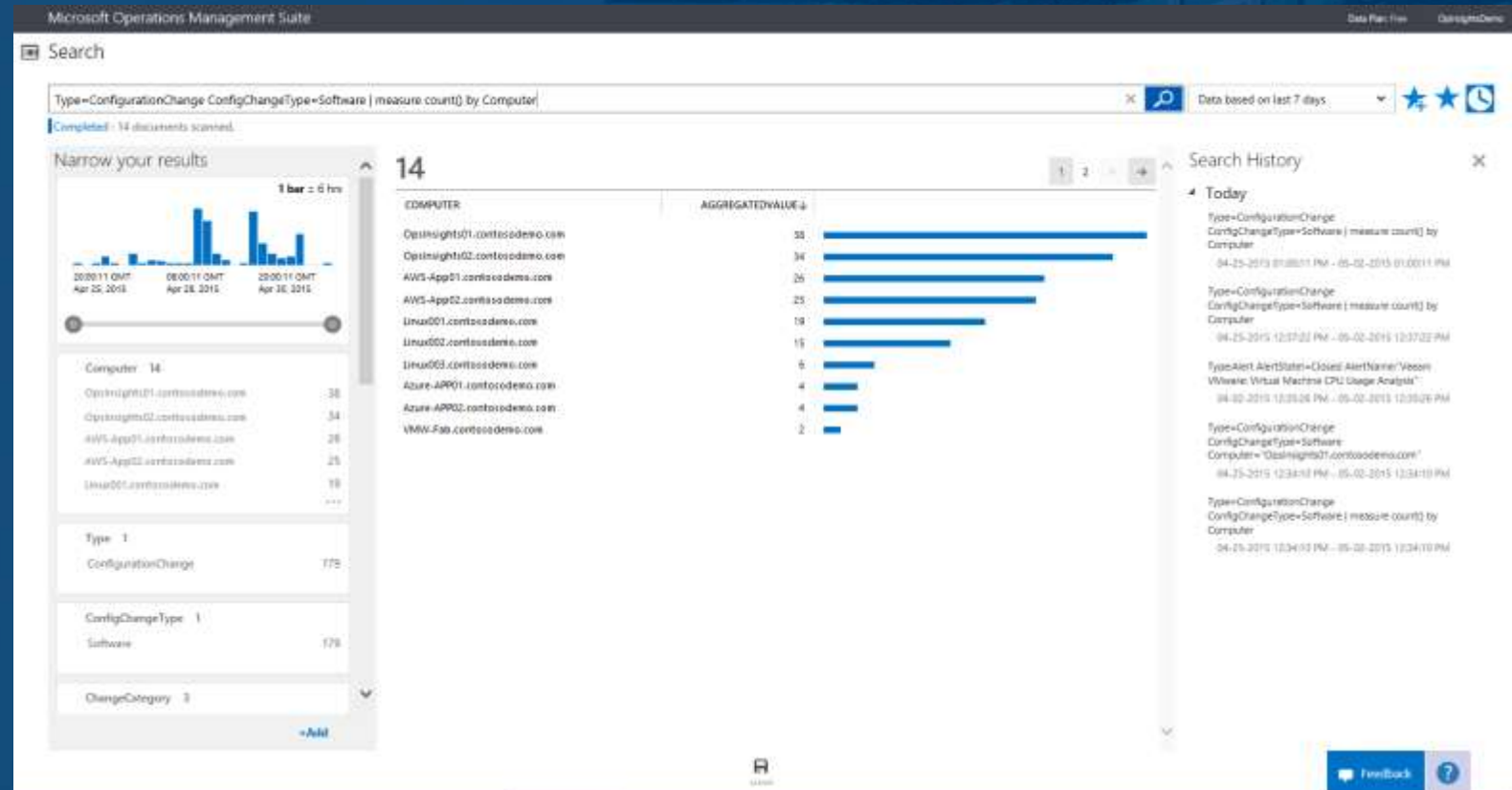
Faster investigation and resolution of operational issues with deep insights



Integrated search

Combine and correlate any machine data from multiple sources

- Query, and filter the results by using facet controls.
- Automated data visualization
- Metrics pivoted around a particular problem areas
- Common search queries



Collect, store, and analyze log data

Efficient tracking of server configuration changes

Change tracking across multiple data sources



Ad-hoc root cause analysis and automated troubleshooting

Powerful search capabilities to drill deeper into areas of interest



Custom graphical saved searches for more insight with dashboards

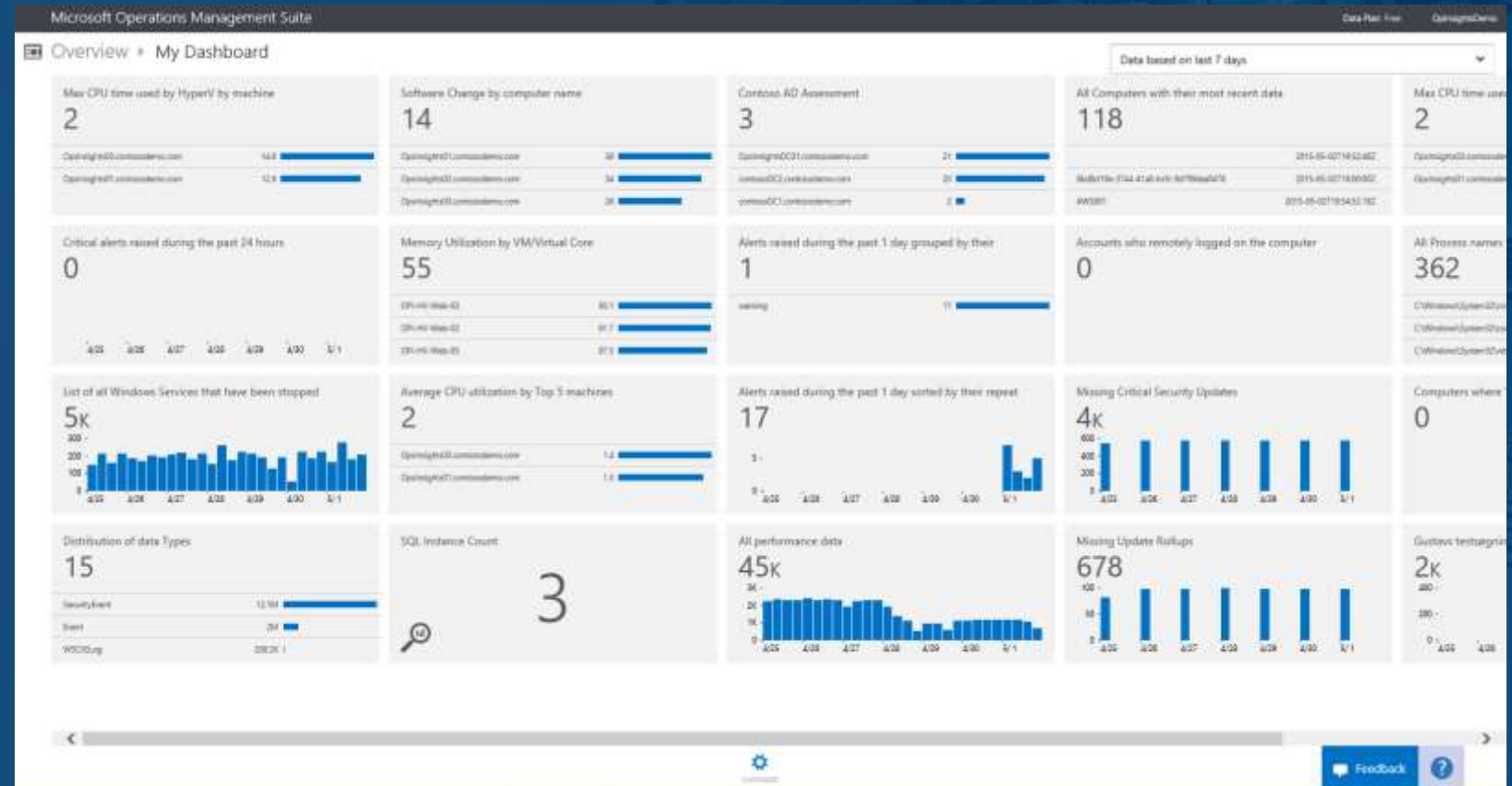
Rich dashboard and reporting capabilities powered by search queries



Custom Dashboard

Visualize all of your saved searches, providing a single lens to all your environment.

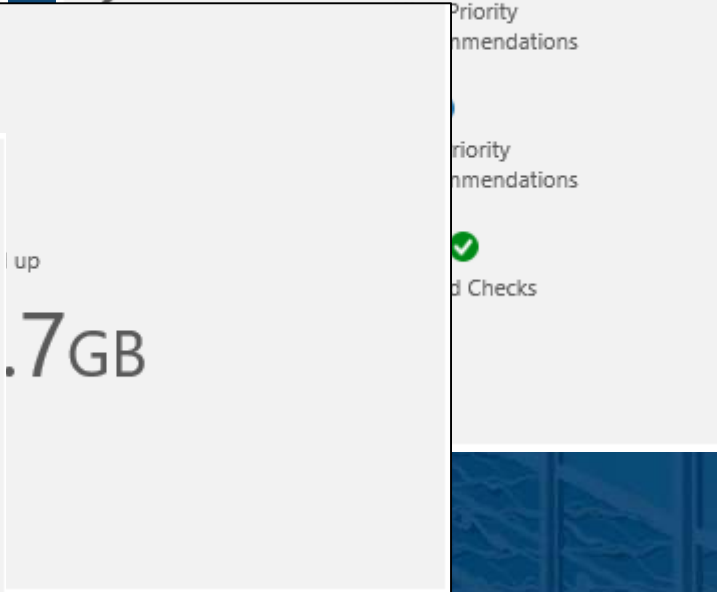
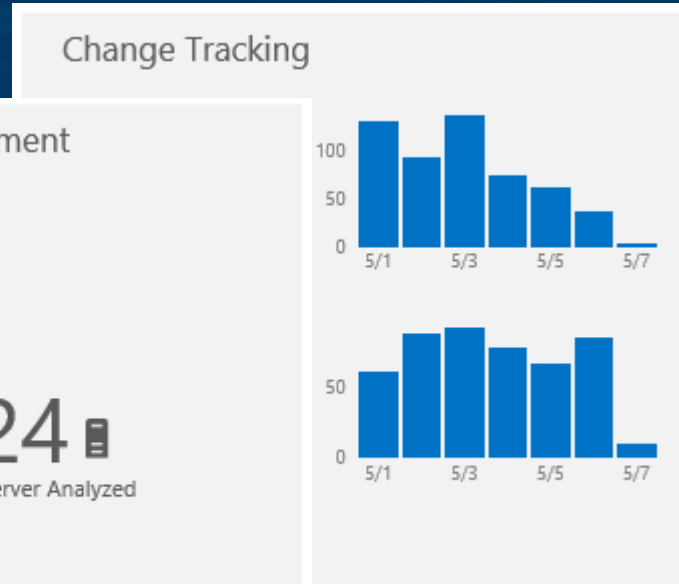
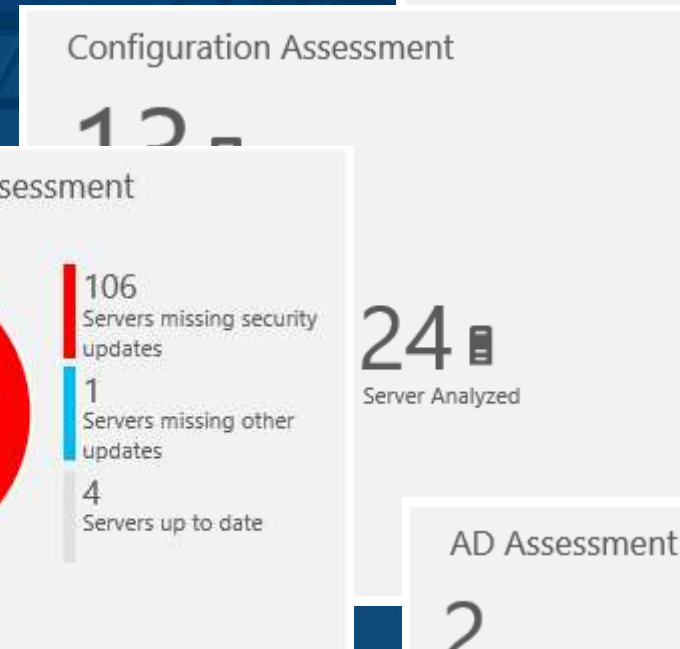
- Custom or sample searches
- Customizable visual information
- Shareable across teams



Solution Packs

Collection of logic, visualization and data acquisition rules

- Powered by search
- Metrics pivoted around a particular problem areas
- Investigate and resolve operational issues
- Can be added/removed and customized

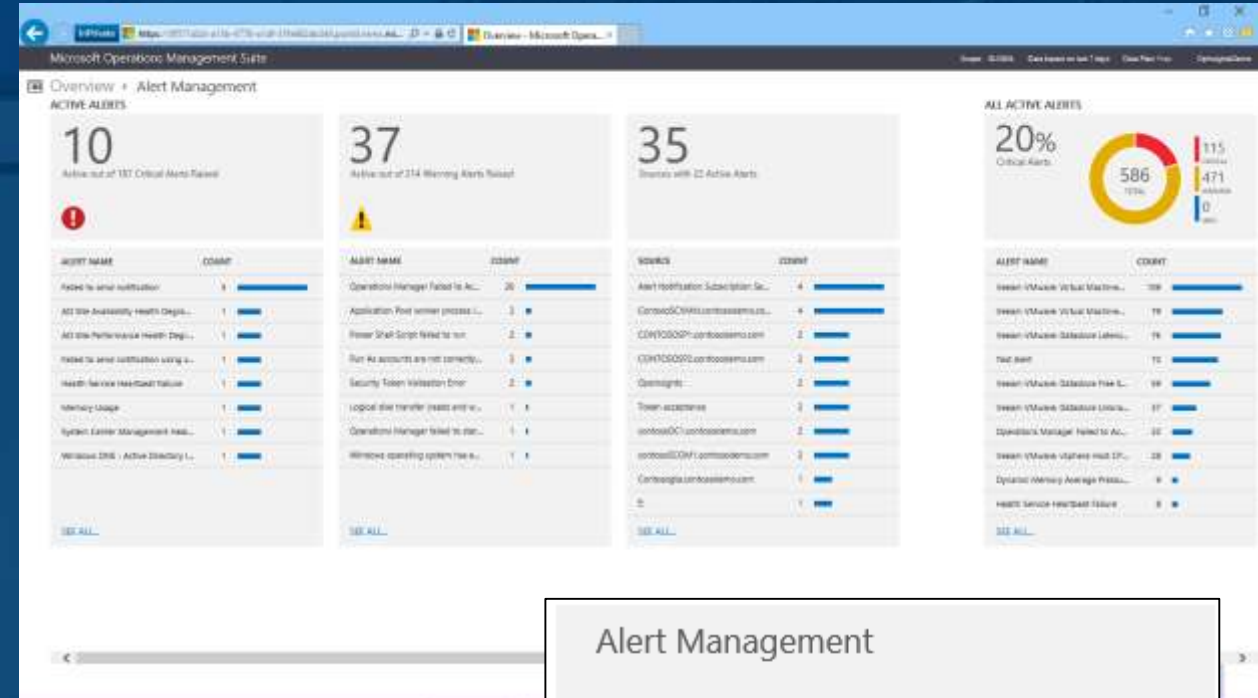


Solution Packs

Alert Management

Expose your integrated System Center Operations Manager alerts

- Web based Alert visualization
- Integrated search for deeper analysis
- Common alert queries

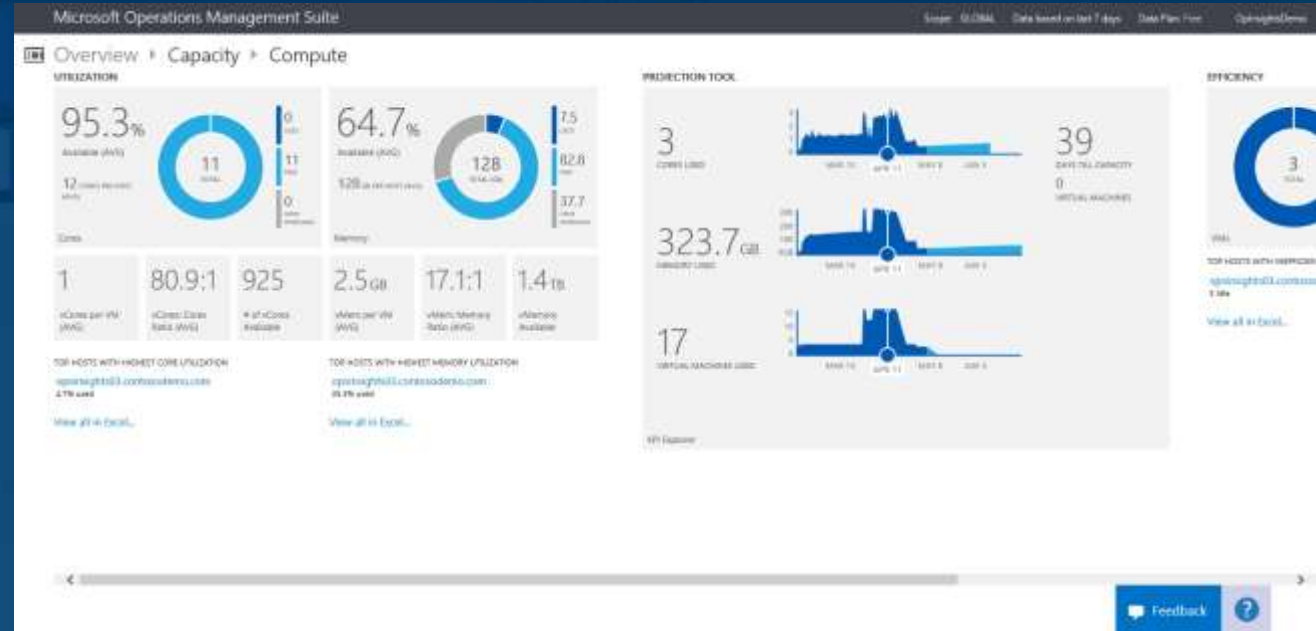


Solution Packs

Capacity planning

Plan for future capacity and trends using historical data

- VM utilization and efficiency
- Compute projection
- Storage utilization



Capacity Planning

23.6 %

Available Cores

62.3 %

Available Memory

42.5 %

Available Storage

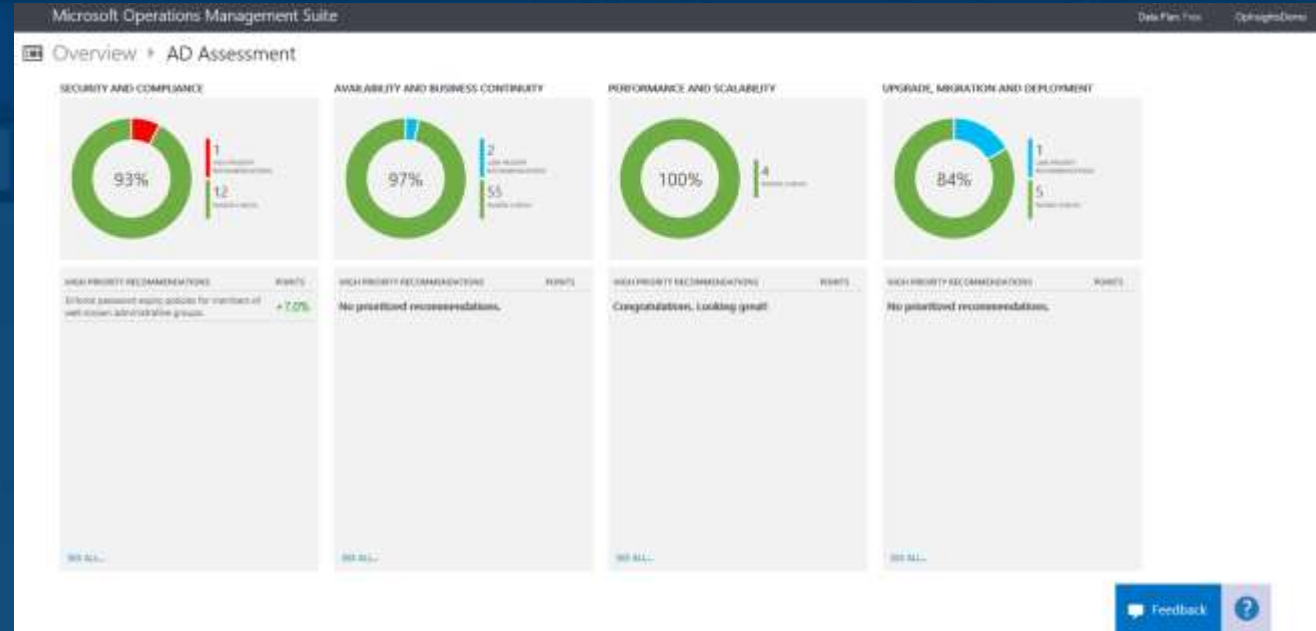


Solution Packs

Active Directory Assessment

Using best practices and data collection, identify potential issues

- Security and Compliance
- Availability and business continuity
- Performance and security
- Upgrade, migration and deployment



AD Assessment

4

Servers Assessed
on Wed May 06 2015

1

High Priority
Recommendations

3

Low Priority
Recommendations

77

Passed Checks

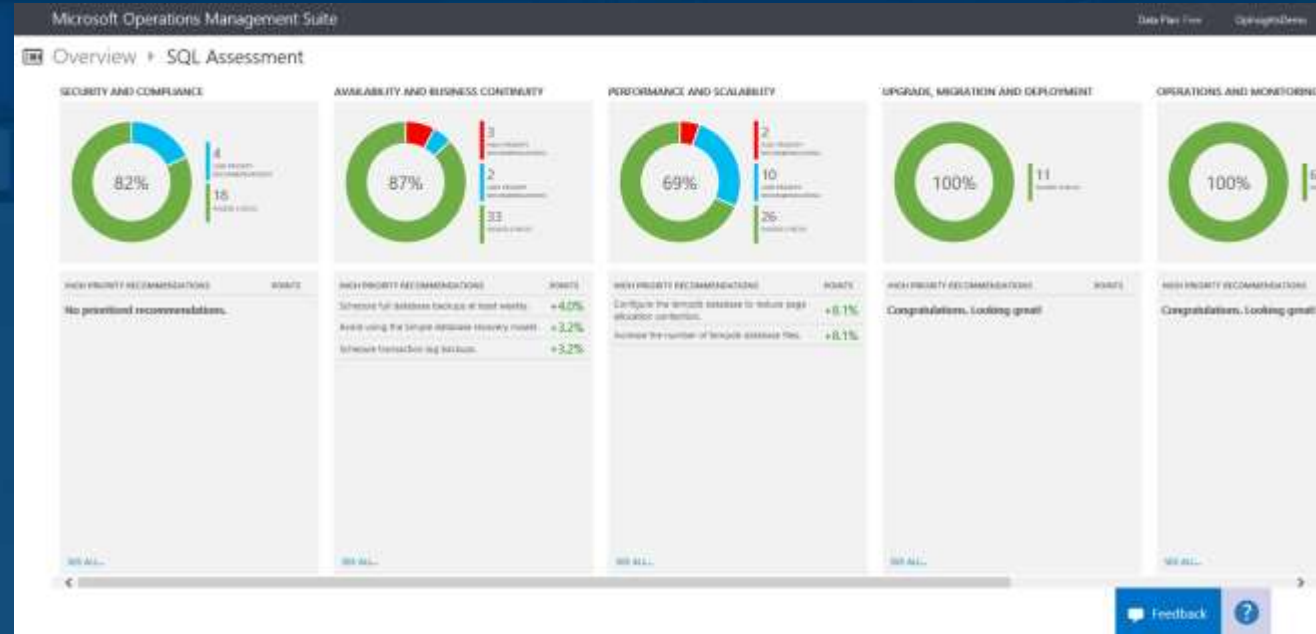


Solution Packs

SQL Server Assessment

Using best practices and data collection, identify potential issues

- Security and Compliance
- Availability and business continuity
- Performance and security
- Upgrade, migration and deployment
- Operations and monitoring
- Change and configuration



AD Assessment

4

Servers Assessed
on Wed May 06 2015

1

High Priority
Recommendations

3

Low Priority
Recommendations

77

Passed Checks

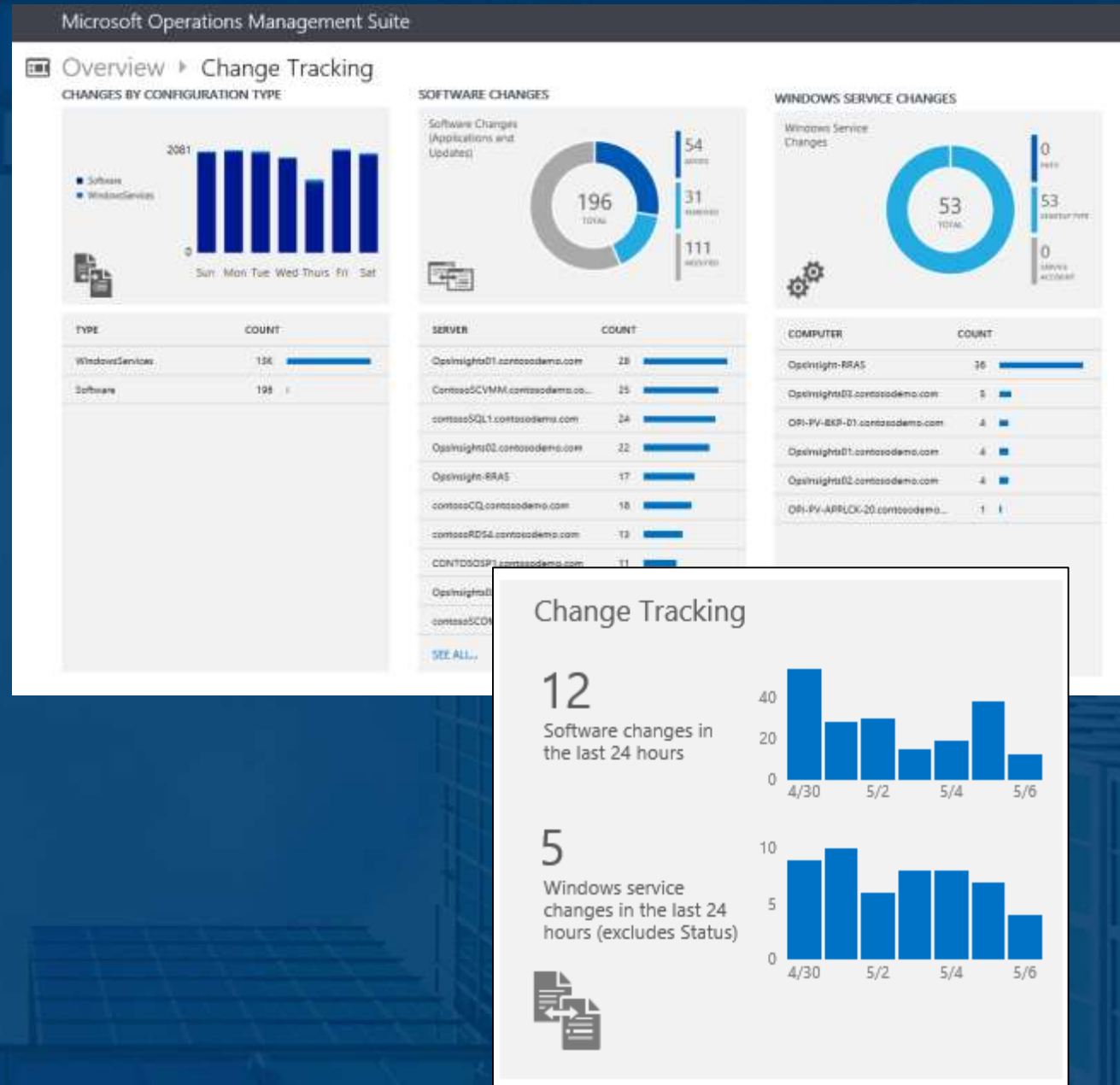


Solution Packs

Change tracking

Track every change on your system across any environment

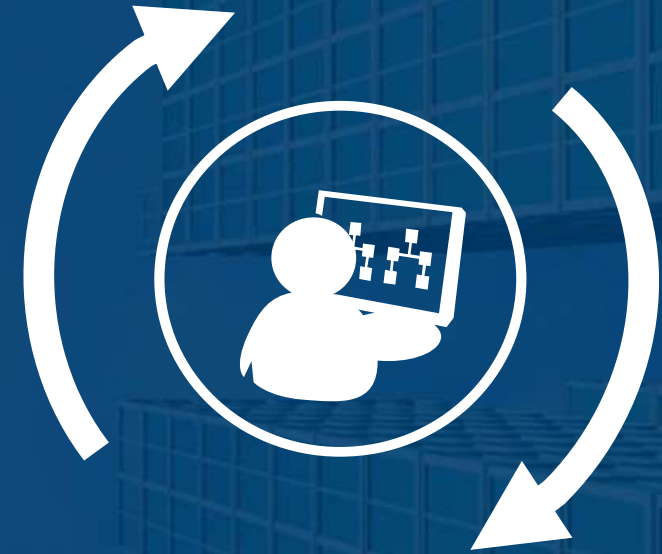
- Configuration type change
- Software changes
- Application changes
- Windows Service changes



Automation

Orchestrate complex and repetitive operations.

- Create, monitor, manage, and deploy resources
- Reduce errors and boosting efficiency



Reduce errors and boost efficiency

Reduction of time-consuming, error-prone cloud management tasks

Creation, monitoring, management, and deployment of resources in hybrid environments



Quick start of automation tasks using Runbook Gallery

Ready-to-use automation sample, utility, and scenario runbooks



Better visibility into automation activities

Runbook monitoring with easy-to-read dashboard charts and log records



A reliable, scalable platform service for orchestrating long-running processes

Integration with Azure and external services using Internet APIs

Integration with the services you depend on



Faster, more consistent delivery of services

Reliable automation through efficient handling of processes



Automation activity reports

Insight into and tracking of automation activities with detailed reporting



Automation Dashboard

Quick glance view of runbook health and status

- Active runbooks
- Total jobs
- Link into Automation portal

Microsoft Operations Management Suite

Overview ▶ Automation

ACCOUNT: ITAutomation

26
Runbooks

215
Jobs in the last 7 days

Automation can be used to automate a wide range of scenarios – from simple day to day manual tasks to complex processes that span multiple datacenters and services.

When you start a runbook in Automation, a job is created. A runbook job is a single execution instance of a runbook. Runbook jobs can be created manually through the Azure portal and through Automation's cmdlets. Runbooks can also be started by schedules, which create jobs automatically, and webhooks, which allow an external client to create jobs from an HTTP request. [Learn more](#)

Automation

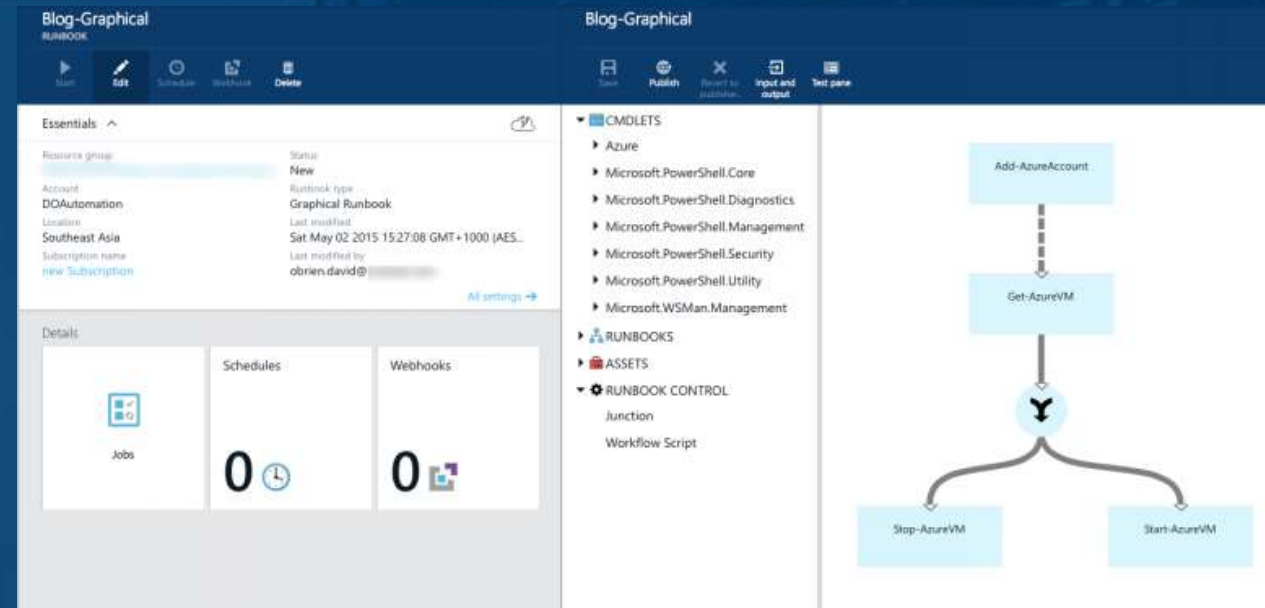
ITAutomation

26
Runbooks

215
Jobs in the last 7 days

New Automation capabilities

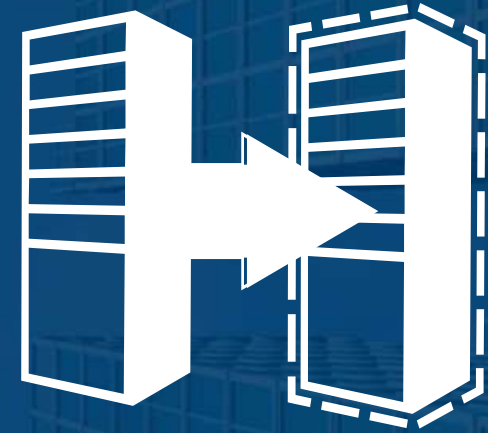
- Built-in integration with on-premises systems and PowerShell DSC nodes.
 - Run Azure Automation runbooks on-premises
 - Automation accessible via new REST API (including GitHub, VSO and ARM)
- Graphical workflow-authoring tool
- Runbook Management from the new Microsoft Azure portal



Security

Help secure your workloads, servers, and users.

Identify missing system updates and malware status. Collect security-related events and perform forensic, audit, and breach analysis. Enable cloud-based patch management for all your environments.



Collect security-related events and perform forensic, audit, and breach analysis

Identification of missing system updates across data centers or in a public cloud

Comprehensive updates assessment across datacenters and public clouds



Comprehensive view into your organization's IT security posture

Detection of breaches and threats with malware assessment



Collect security related events

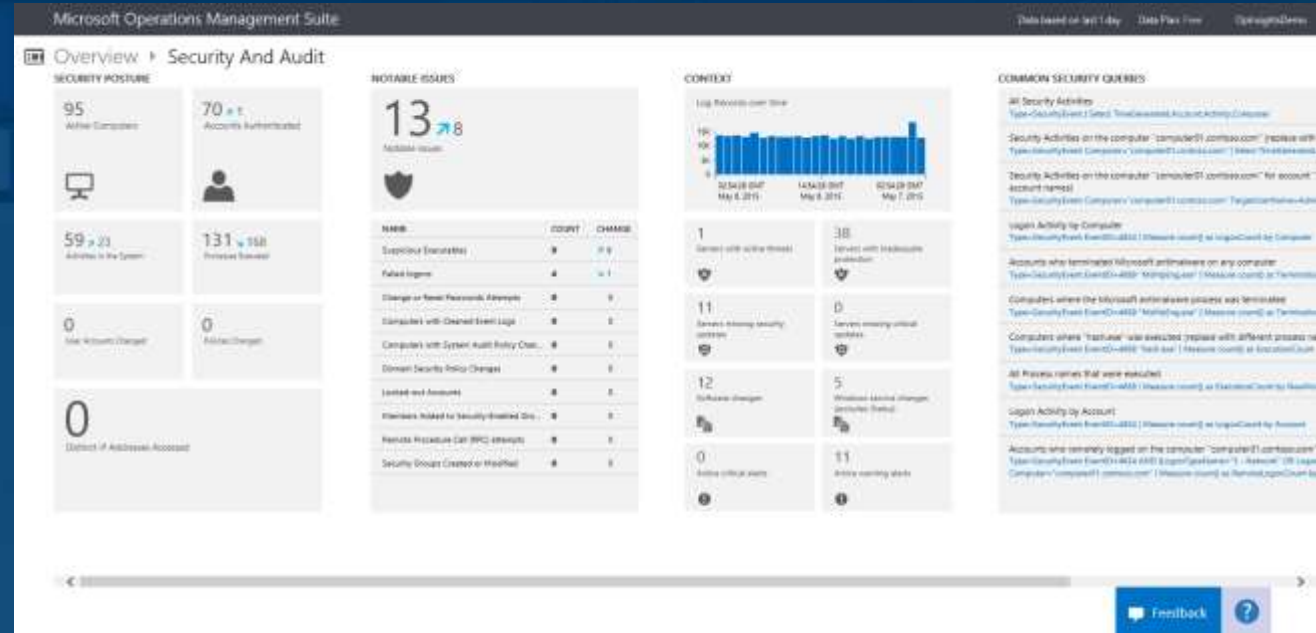
Perform forensic, audit and breach analysis



Security and audit

Collect security related events and perform forensic, audit and breach analysis.

- Security posture
- Notable issues
- Summary threats



Security and Audit

95

Active Computers in the last 24 hours

71 ↗ 2

Accounts Authenticated in the last 24 hours

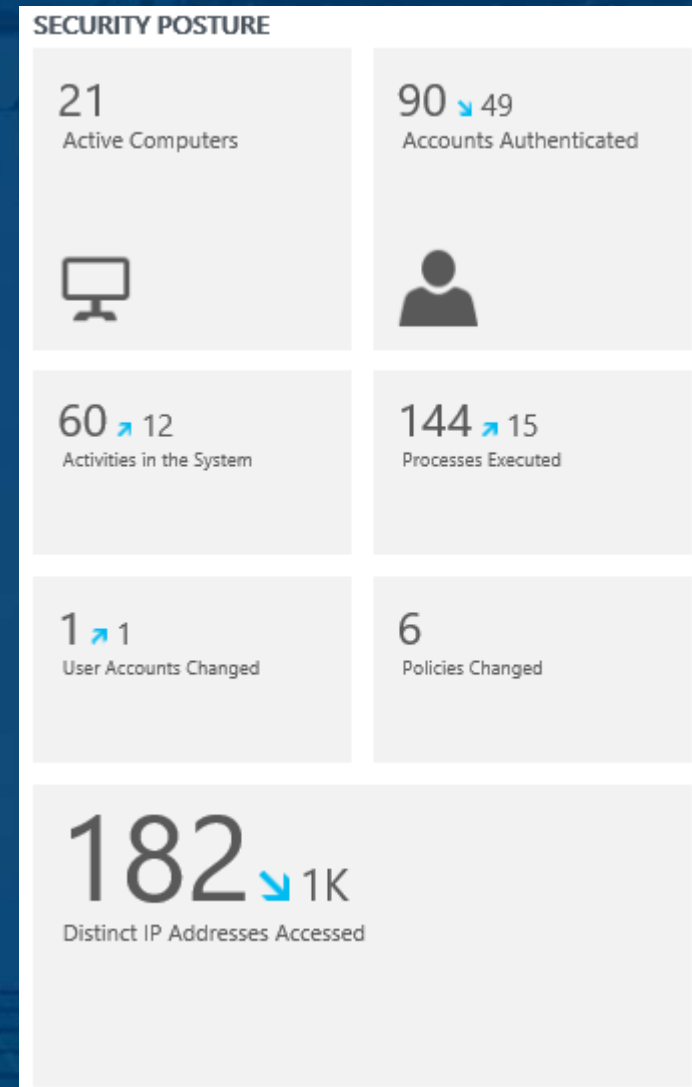


Security Solution Pack

Security Posture

Quick glance showcasing server workload and server security threats

- Computer growth change
- Account authentication
- Total system activities
- Processes executed
- Change in policy
- Remote IP Tracking




Security Solution Pack


Notable issues






Understand notable security issues, and audit rate of change

- Failed account access
- Security policy and group changes
- Password resets
- Event log cleaning
- Lock-out accounts

NOTABLE ISSUES

75  **44**
Notable issues



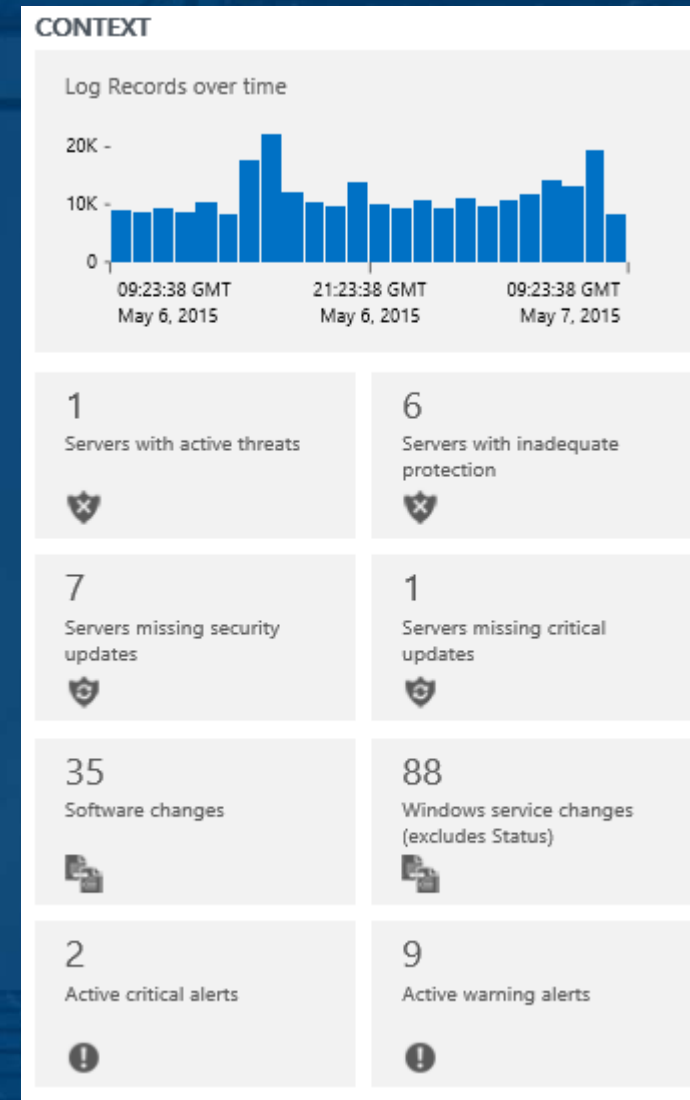
NAME	COUNT	CHANGE
Failed logons	58	 45
Computers with System Audit Policy Chan...	6	0
Suspicious Executables	4	 2
Security Groups Created or Modified	2	 1
Remote Procedure Call (RPC) attempts	2	0
Change or Reset Passwords Attempts	1	 1
Members Added to Security-Enabled Gro...	1	 1
Computers with Cleaned Event Logs	1	0
Domain Security Policy Changes	0	0
Locked-out Accounts	0	0

Security Solution Pack

Security context

Quick view of security position across your enterprise

- Active threats
- Patch status
- Software changes
- Service changes
- Critical and warning alerts

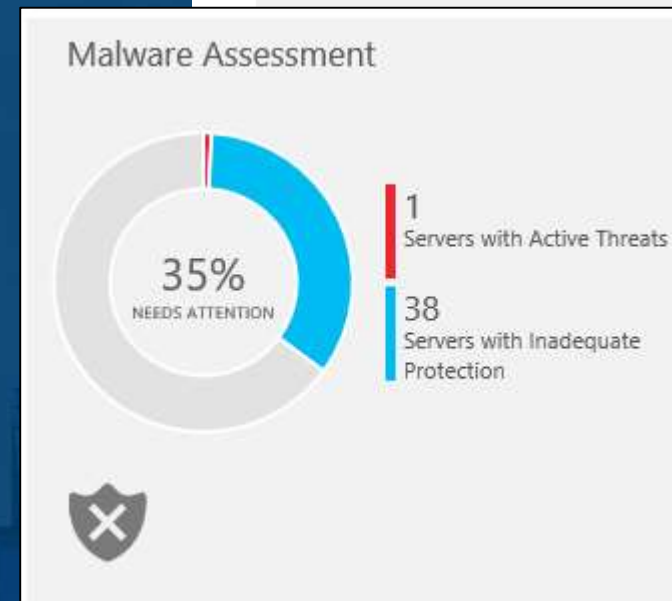
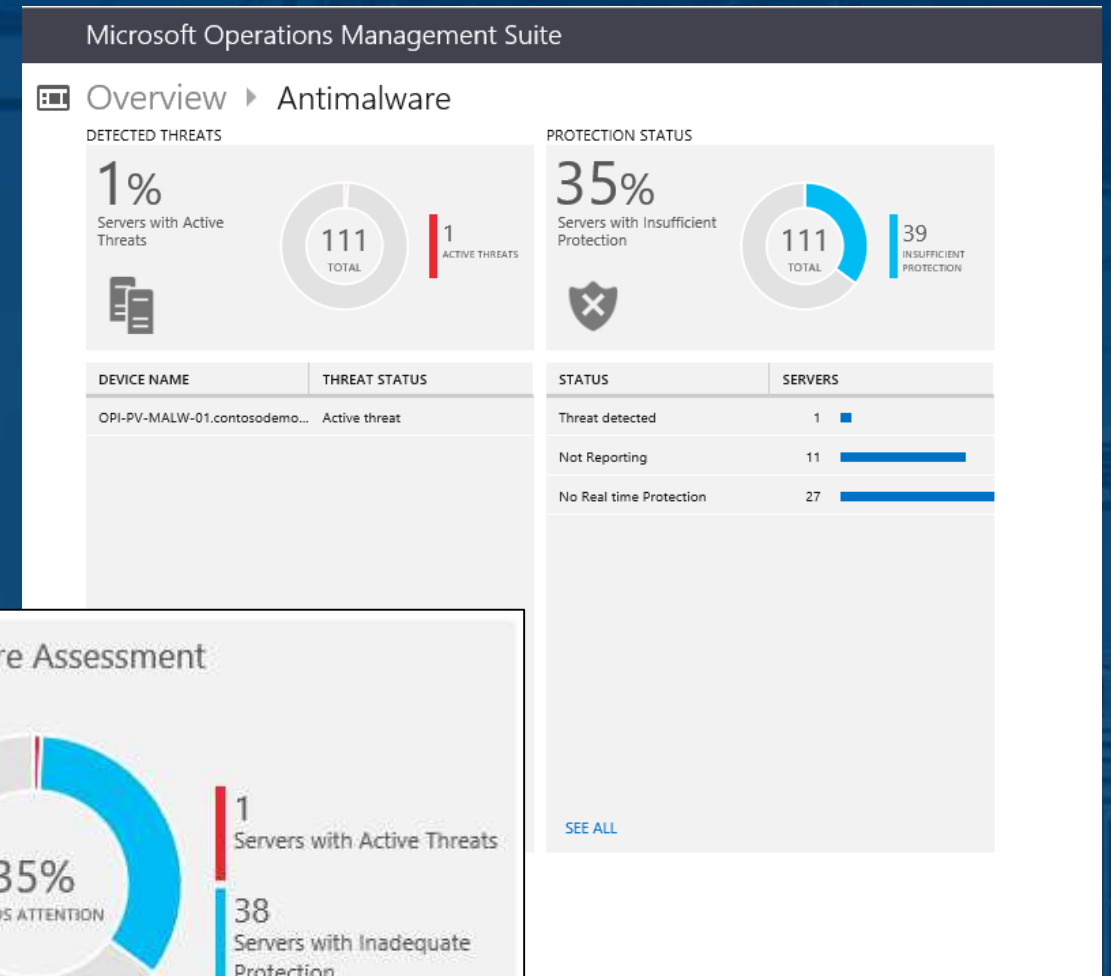


Solution Packs

Malware assessment

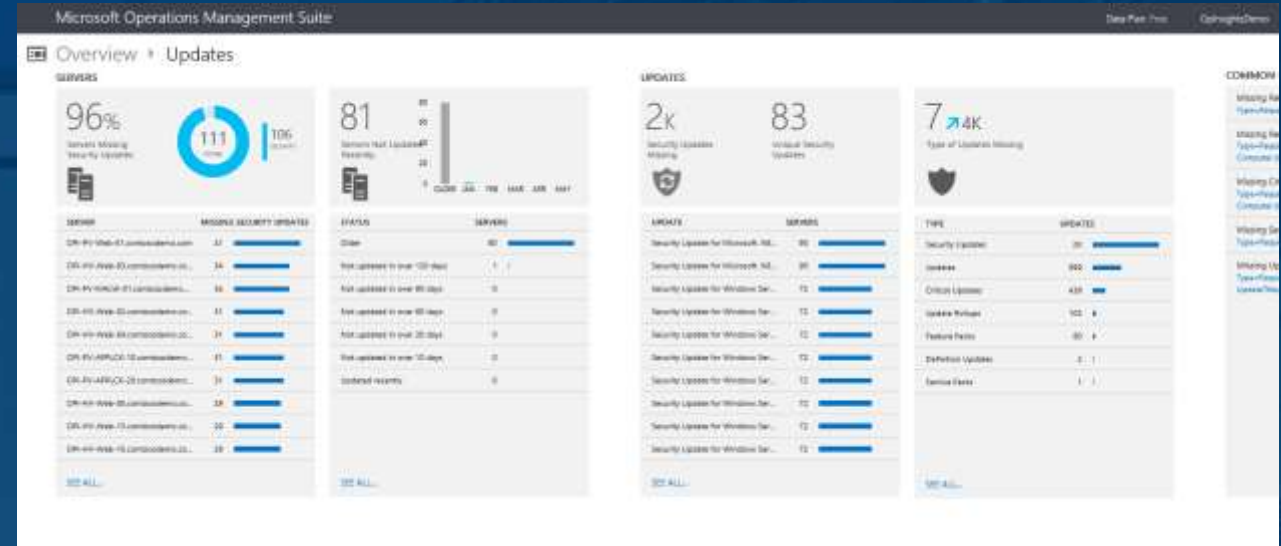
Quickly define your servers malware status and potential threats

- Detected threats
- Protection status



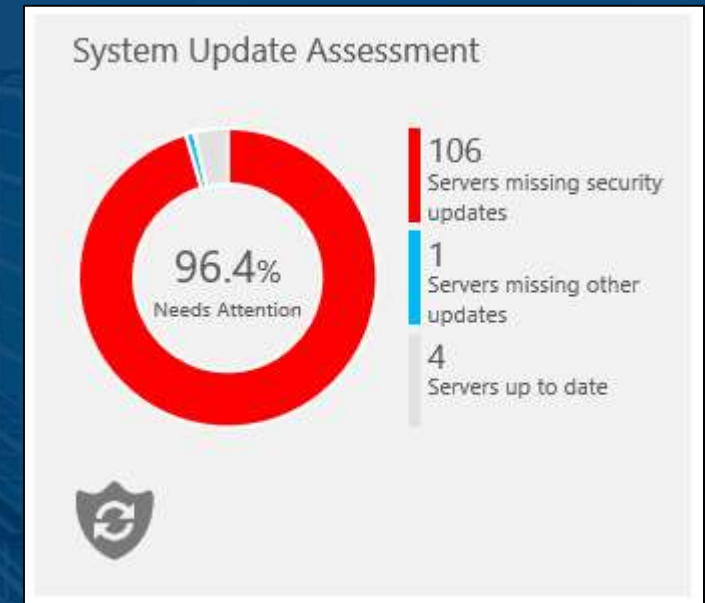
Solution Packs

System Update Assessment



Understand server update and patching status across your environment

- Servers missing security updates
- Servers not updated recently
- Types of updates missing



Pricing and licensing

Microsoft Operations Management Suite add-on

	Standard	Datacenter
Operational Insights	100 GB	500 GB
Backup	2 VMs	10 VMs
Site Recovery	2 VMs	10 VMs
Automation	10,000 Min	50,000 Min
Suite price *	\$717 per year	\$3,585 per year
	\$430 per year	\$2,150 per year
Purchased separately	\$994 per year	\$4,970 per year

Extend your System Center value

(Coming July 2015)

Using System Center today? Take advantage of the Microsoft Operations Management Suite add-on. Get access to all the new services OMS offers, with a convenient step-up price for all existing System Center customers.

For every System Center Standard or Datacenter license you own, you will be able to purchase a corresponding Microsoft Operations Management Suite add-on.

** Introductory offer through December 31, 2015, includes site recovery to Azure.*

Purchased Separately

Access only the IT management services you need, enabling you to on-board quickly and have immediate value, paying only for the features that you use.

Each service is priced either per virtual machine, per GB of ingested data, or per minute. Most services include a FREE tier to get started.

Purchased Separately

Operational Insights	<u>Starting at \$2.30 per GB</u>
Backup	<u>Starting at \$5 per VM / month</u>
Site Recovery	<u>Starting at \$16 per VM / month</u>
Automation	<u>Starting at \$0.002 per min</u>

Operations Management Suite Roadmap

Analytics | Automation | Recovery >>

Containers

Configuration

Configuration management database

Remote operating system management

Wire data

Inventory

Alerting

Linux

Patching



Security | Update | Change | Dashboards >>





© 2015 Microsoft Corporation. All rights reserved. Microsoft, Windows, Windows Vista and other product names are or may be registered trademarks and/or trademarks in the U.S. and/or other countries. The information herein is for informational purposes only and represents the current view of Microsoft Corporation as of the date of this presentation. Because Microsoft must respond to changing market conditions, it should not be interpreted to be a commitment on the part of Microsoft, and Microsoft cannot guarantee the accuracy of any information provided after the date of this presentation. MICROSOFT MAKES NO WARRANTIES, EXPRESS, IMPLIED OR STATUTORY, AS TO THE INFORMATION IN THIS PRESENTATION.